

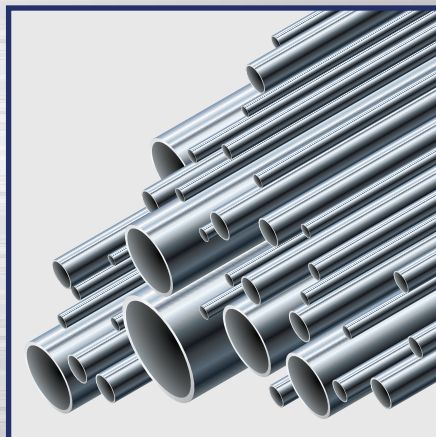
# **TECHLINE**

---

## **INTERNATIONAL**



***Your Global Sales Partner***





## THE TECHLINE COMMITMENT

As a leader in global sourcing since 1982,  
we are dedicated to placing the world's manufacturing  
capabilities within the grasp of our customers. Giving you a  
competitive edge needed in the marketplace.

*TechLine can make  
the world work for you!*



## Products and Parts Sourced Worldwide

Since 1982, TechLine has helped businesses take advantage of global sourcing opportunities. TechLine has the expertise necessary to make the process of global sourcing simple, efficient and profitable. Let TechLine help you discover a smarter way to do business.

## That's Where TechLine Steps In

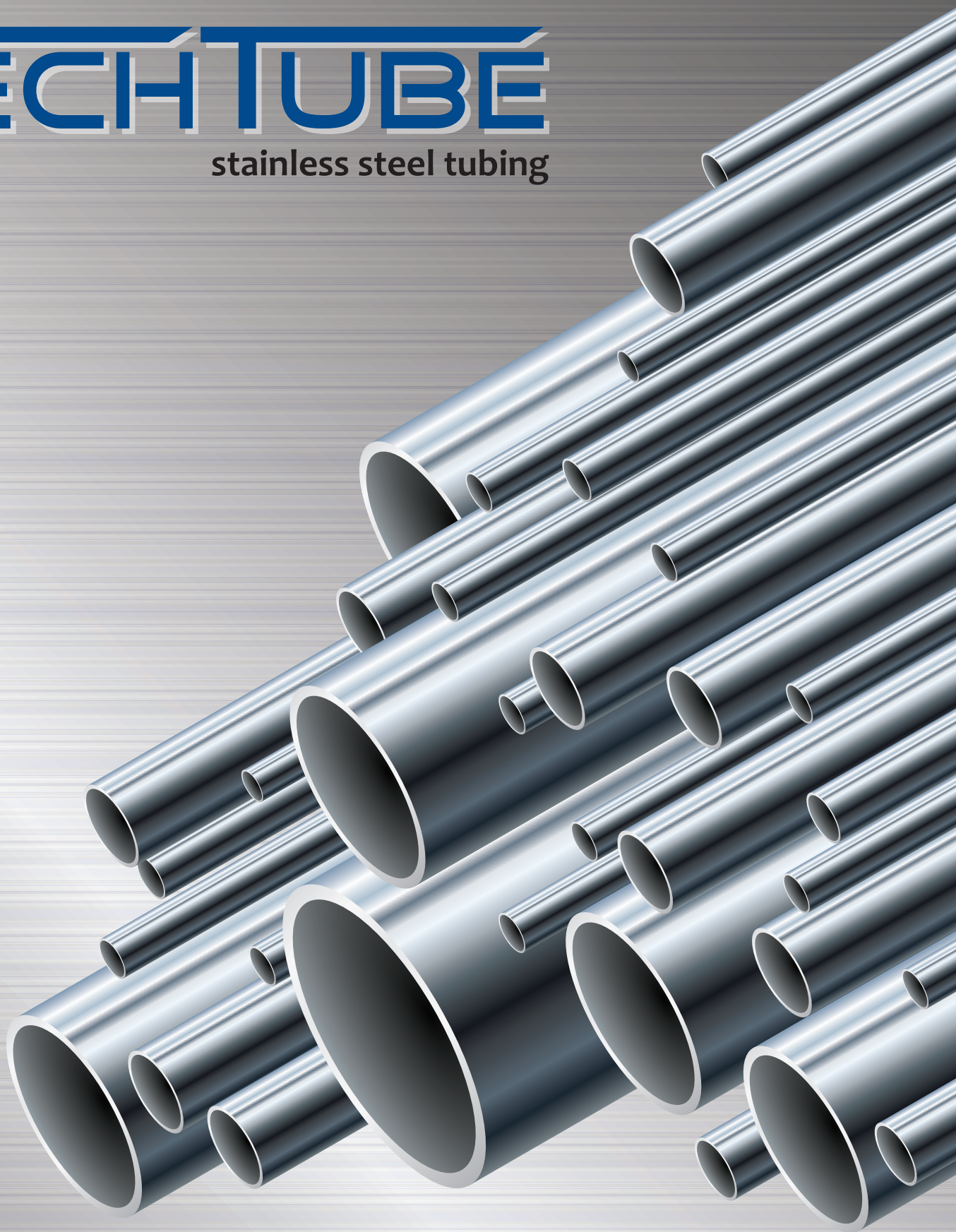
TechLine was founded on the principle of offering unparalleled value to companies interested in manufacturing overseas. TechLine is known as the "manufacturer's manufacturer" because it seamlessly arranges offshore design, prototyping, tooling, production, quality control and transportation.

As a manufacturer for Fortune 500 and smaller companies alike, TechLine sources and manufactures many product categories, from small casting, forging, tubing, machine parts, and valves. You might not know that Techline produced the product (and for many manufacturers, we are the well-kept secret to their success), but we guarantee that you have used or seen a TechLine product.



# TECH TUBE

stainless steel tubing



**TECHLINE**  
INTERNATIONAL



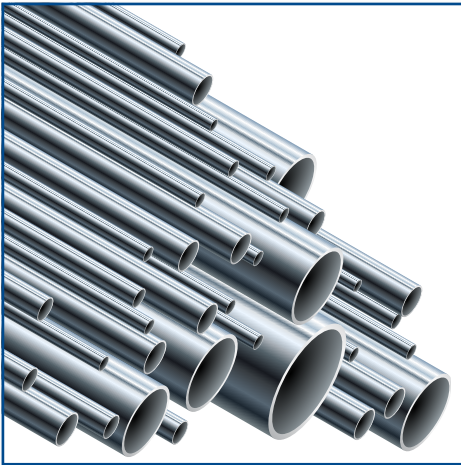
## Working Pressure for Seamless Tubing 316 Stainless Steel Seamless

Tube O.D. Size	0.035	0.049	0.065	0.083	0.095
1/8"	10900				
1/4"	5100	7500	10200		
3/8"	3300	4800	6500		
1/2"	2600*	3700	5100	6700	
3/4"		2400*	3300	4200	4900
1"			2400*		

**\*NOT SUITABLE FOR GAS SERVICE**

*These stress values were taken from various codes. Use for estimating only.*

## We Stock a Large Inventory of Popular Sizes for Fast Delivery!



### ANNEALING

All tubing is Annealed & Polished

### SPECIFICATIONS

Meets the requirements of ASTM A-269 & A-213

- 316 Standard Stocked
- Special Grades Available Upon Request
- Superior Quality
- Qualified Mill Sources
- Certified Mill Certificates
- Standard Sizes 1/8" – 1"
- Standard 20' Lengths
- Coil Tubing Available Upon Request

### Techline International also has:

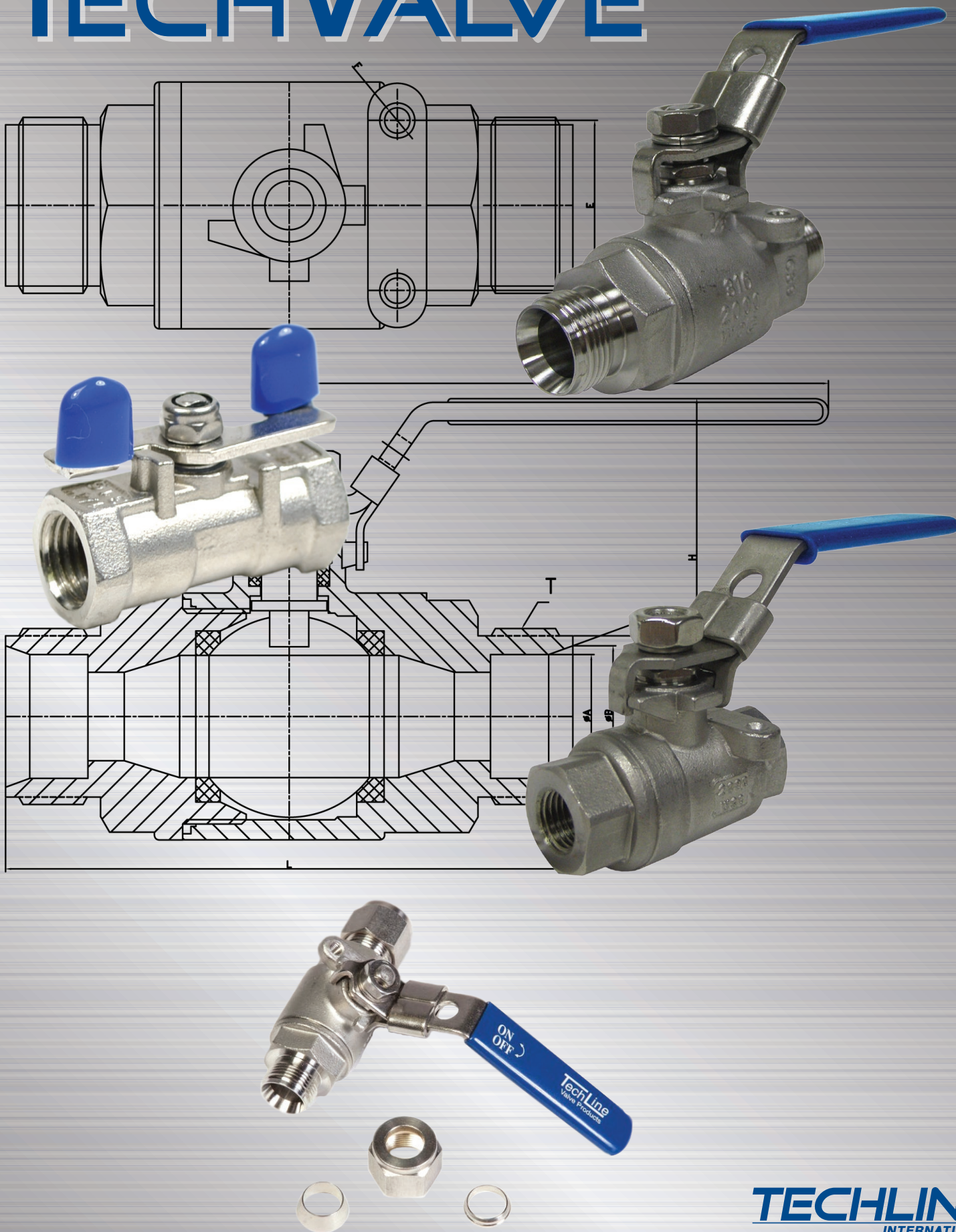
- Economical 316SS Ball Valves Threaded & Compression
- B4 Style Transmitter Brackets
- Casting and Forging for Large Volume Items

### CONTACTS

Don Wright, Sales Manager  
cell: 251.689.6287  
office: 251.380.8940

Wendy D'Olive, President  
office: 251.380.8940

# TECHVALVE



## 11 Series Valve (size 1/4"):

- Pipe Thread in accordance to ISO 228/1
- Wing handle
- Blow out proof stem
- Investment cast body
- Stainless steel 1000 PSI
- Material: ASTM A351/A351M



## 25 Series Valve (sizes 1/4" thru 2" FNPT):

- Pipe Thread in accordance with ANSI B2.1, BS 21.1973
- Locking Lever Handle
- With mounting device
- Blow-out proof stem/full bore
- Investment casting body and cap
- Stainless Steel 2000 PSI W.O.G.
- Material: ASTM CF8M A351, ASTM CF8 A351

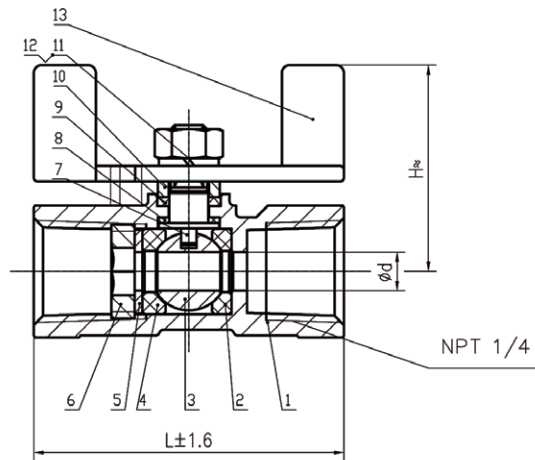


## 50 Series Valve (sizes 1/4" thru 1" Compression):

- Locking Lever Handle
- Blow-out proof stem/full port
- Investment casting body and cap
- Stainless Steel 2000 PSI W.O.G.
- Material: ASTM CF8M A351
- Nuts & Ferrule are optional

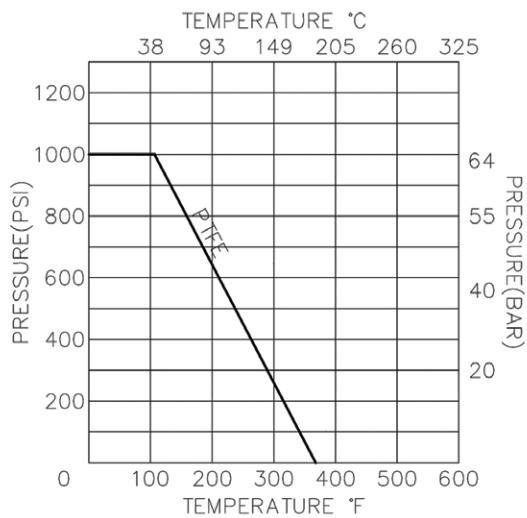


## 11 Series Valve (size 1/4"):



DN	L	d	NPT	H ≈
8	1/4"	40	5	1/4"

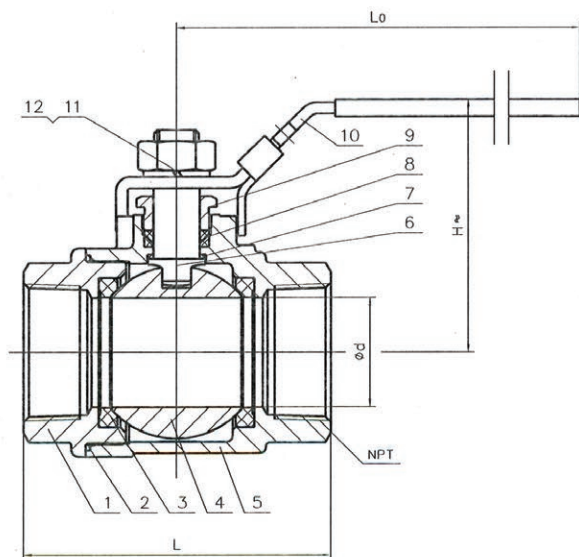
SPECIFICATIONS		
Nominal pressure	1000 PSI	
Shell test pressure	10.4	MPa
Seal test pressure	0.6	
Applicable temperature	-29~180	°C



13	1PC Q11F-1000-11	HANDLE	1	201	
12	GB6170-86	NUT	1	304	
11	GB93-87	SPRING WASHER	1	304	
10	1PC Q11F-1000-10	GLAND	1	304	
9	1PC Q11F-1000-09	PACKING	1	PTFE	
8	1PC Q11F-1000-08	STEM WASHER	1	PTFE	
7	1PC Q11F-1000-07	STEM	1	A276 316	
6	1PC Q11F-1000-06	NUT	1	316	
5	1PC Q11F-1000-05	GASKET	1	316	
4	1PC Q11F-1000-04	SEAT RING 2	1	PTFE	
3	1PC Q11F-1000-03	BALL	1	A351 CF8M	
2	1PC Q11F-1000-02	SEAT RING 1	1	PTFE	
1	1PC Q11F-1000-01	BODY	1	A351 CF8M	
NO.	DRAWING NO.	DESCRIPTION	Q'TY	MATERIAL	REMARKS
TECHLINE PART# 11-0025W					
THREADED BALL VALVE					
1PC Q11F-1000-00					

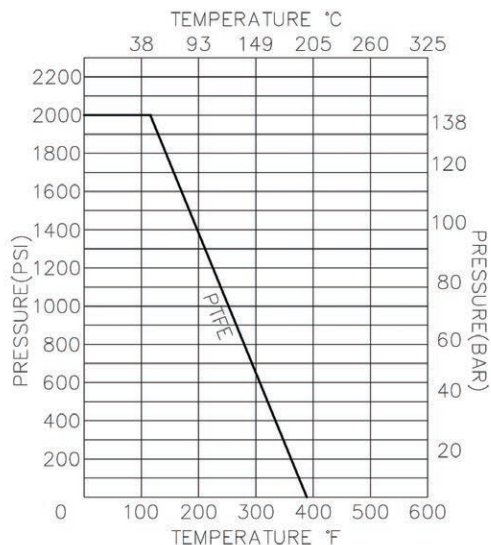


## 25 Series Valve (sizes 1/4" thru 2" FNPT):



SPECIFICATIONS		
Nominal pressure	2000 Psi	
Shell test pressure	20.7	MPa
Seal test pressure	0.6	
Applicable temperature	-40~180	°C

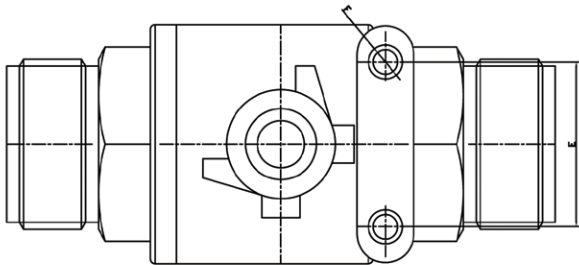
Nominal diameter		L	d	NPT	L0	H≈
8	1/4"	55	11	1/4"	95	48
10	3/8"	55	11.5	3/8"	95	48
15	1/2"	63	15	1/2"	105	54
20	3/4"	73	19.5	3/4"	120	65
25	1"	84	25	1"	140	71
32	1 1/4"	98	32	1 1/4"	145	81
40	1 1/2"	106	38	1 1/2"	170	96
50	2"	121	49.5	2"	185	105



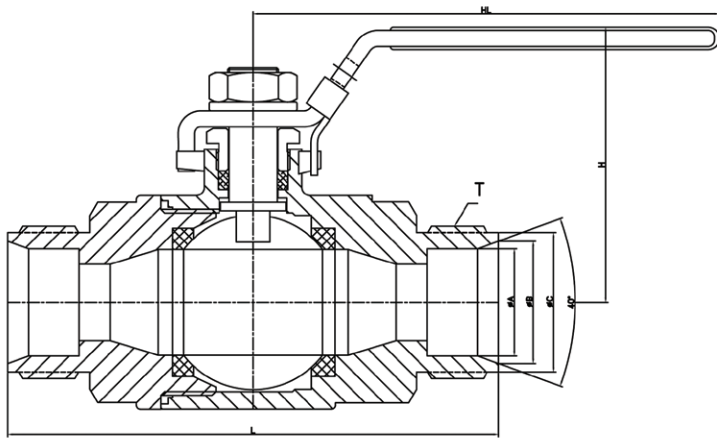
12	GB/T 6172-2000	NUT	1	A194-8	
11	GB/T 93-1987	SPRING WASHER	1	304	
10	Q11F-2000-10	HANDLE	1	201	
9	Q11F-2000-09	GLAND	1	A194-8	
8	Q11F-2000-08	PACKING		PTFE	
7	Q11F-2000-07	STEM WASHER	1	PTFE	
6	Q11F-2000-06	STEM	1	A276 316	
5	Q11F-2000-05	BODY	1	A351 CF8M	
4	Q11F-2000-04	BALL	1	SS316	
3	Q11F-2000-03	SEAT RING	2	PTFE	
2	Q11F-2000-02	GASKET	1	PTFE	
1	Q11F-2000-01	BONNET	1	A351 CF8M	
NO.	DRAWING NO.	DESCRIPTION	Q'TY	MATERIAL	REMARKS
GENERAL DRAWING					
MARK	BEFORE MODIFIED	AFTER MODIFIED	DATE	2PC THREADED BALL VALV	
DRA.		APP.		SCALE	
CHK.		DATE		2PC Q11F-2000-00	

Part No. Example: 25-0025 (1/4")  
 25-0038 (3/8")  
 25-0050 (1/2")  
 25-0100 (1")

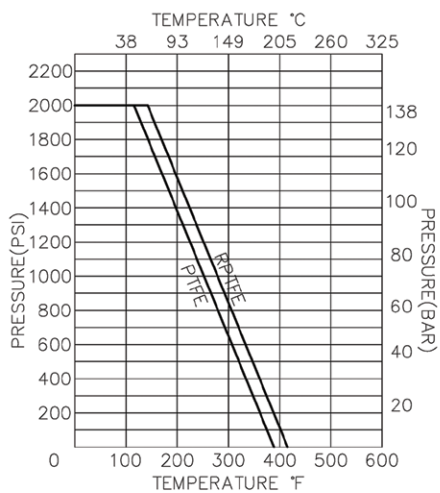
## 50 Series Valve (sizes 1/4" thru 1" Compression):




SIZE	øA	øB	øC	E	F	T	L	H	HL
1/4"	6.5	8.74	9.4	28.5	#10-32	7/16"*20UNEF	67	47	101
3/8"	9.65	11.89	12.57	28.5	#10-32	9/16"*20UNEF	67	47	101
1/2"	12.85	15.9	17.3	28.5	#10-32	3/4"*20UNEF	77	49.6	101
3/4"	19.16	21.3	23.6	35	#10-32	1"*20UNEF	83	58	101
1"	25.65	29.6	31.5	35	#10-32	1 5/16"*20UNEF	93	62	101



No.	PART NAME	MATERIAL
1	BODY	A351 CF8M
2	END CAP	A351 CF8M
3	BALL	A351 CF8M Gr.CF8M
4	BALL SEAT	RPTFE
5	BODY SEAL	PTFE
6	STEM	A276 TYPE 316
7	THRUST WASHER	RPTFE
8	STEM PACKING	PTFE
9	GLAND NUT	SUS 304
10	STEM WASHER	SUS 304
11	STEM NUT	SUS 304
12	HANDEL	SUS 304
13	HANDEL COVER	PVC
14	HANDEL LOCKING	SUS 304



							REV	F
2000 PSI 2-pc Compression Ball Valve	MATERIAL	APPROVE	CHECK			DRAWN BY	Peggy	
		SCALE	FREE	UNIT	mm	DATE	2011.09.07	
		PART NO	AF-70			Q'TY		
	OTHER	DWG NO	AF-70		TITLE		Compression End 2-pc Ball Valve	
REMARKS								

Part No. Example: 50-0025 (1/4")  
 50-0038 (3/8")  
 50-0050 (1/2")  
 50-0100 (1")

# UNIVERSAL MOUNTING BRACKET FOR TRANSMITTERS



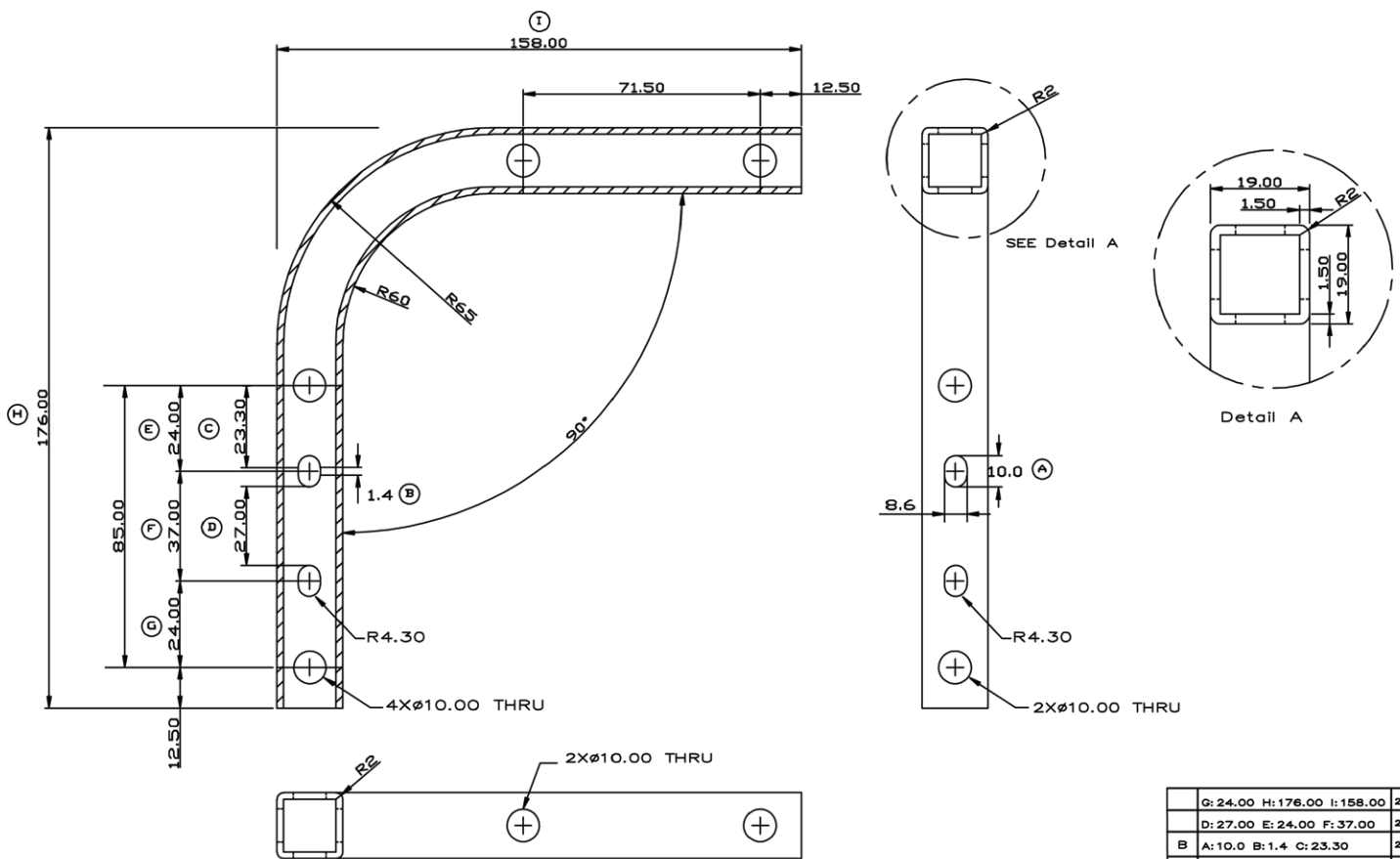
## 304SS Mounting Bracket

For Rosemount, Omega, Yokogawa and several other transmitters.  
(see dimensions for exact fit)

Brackets sold alone or with a U-Bolt and nuts,  
or with retainer and U-Bolt assembly (pictured).

**\*\*TRANSMITTER BOLTS NOT PROVIDED\*\***

# UNIVERSAL MOUNTING BRACKET FOR TRANSMITTERS



	G: 24.00 H: 176.00 I: 158.00	2011.02.28
	D: 27.00 E: 24.00 F: 37.00	2011.02.28
B	A: 10.0 B: 1.4 C: 23.30	2011.02.28
A	INITIAL ISSUE	2011.02.15

REVISIONS			
TOLERANCES .XX±0.25 .XXX±0.127 ANGULAR±1°		Material.: S/S 304	
DIMENSIONS IN MILLIMETRES UNLESS OTHERWISE STATED		Dwg No. TUB-B4-SS-2	
APRV.: W.Y.	Date.: 2011.02.15	Drawer.: Jennifer lai	



# FORGINGS & CASTINGS

## TechLine International Forgings & Castings

TechLine believes in providing World-Class Castings and Forgings from overseas suppliers and manufacturers. We specialize in 316 Stainless Steel but can also provide Carbon Steel, Brass, Aluminum and other metal parts or components as needed.

TechLine has a vast network of quality overseas manufacturers that have been established through nearly three decades of manufacturing experience and include: Mainland China, Hong Kong, Taiwan and other parts of the Asian/Pacific Basin, and Eastern Europe.

We work with you to provide the exact custom Forging or Casting for your volume part needs. We are capable of providing Die Casting, Wax mold, Sand Casting or Investment Castings for your parts, or we can provide a custom Forged part. All parts provided will meet your required specifications and we will provide certs for all parts we provide.

Prototypes of all parts are provided for customer approvals before we begin any production to ensure a smooth process for you. Give us a call and see what we can do for you. We are proud to be your Global Sales Partner!

- **Die Casting:** A low and high pressure process for aluminum or brass alloys. Cost effective for big parts, with good surface finish.
- **Sand Casting:** Mainly for gray and ductile iron, big volume. A low cost process that promises dimensional consistency.
- **Investment Casting:** Tight tolerances, good surface quality, less machining needed, low tooling costs.
- **Forging:** Open or closed die. Small, medium to large components.



# FORGINGS & CASTINGS

## Forgings:





# FORGINGS & CASTINGS

## Castings:





# ***TECHLINE***

**INTERNATIONAL**

**30852 State Hwy 181  
Spanish Fort, AL 36527**

**251.380.8940**

**800.395.3369**

**(fax) 251.380.8941**

**[sales@techlinemfg.com](mailto:sales@techlinemfg.com)**

**[www.techlineint.com](http://www.techlineint.com)**