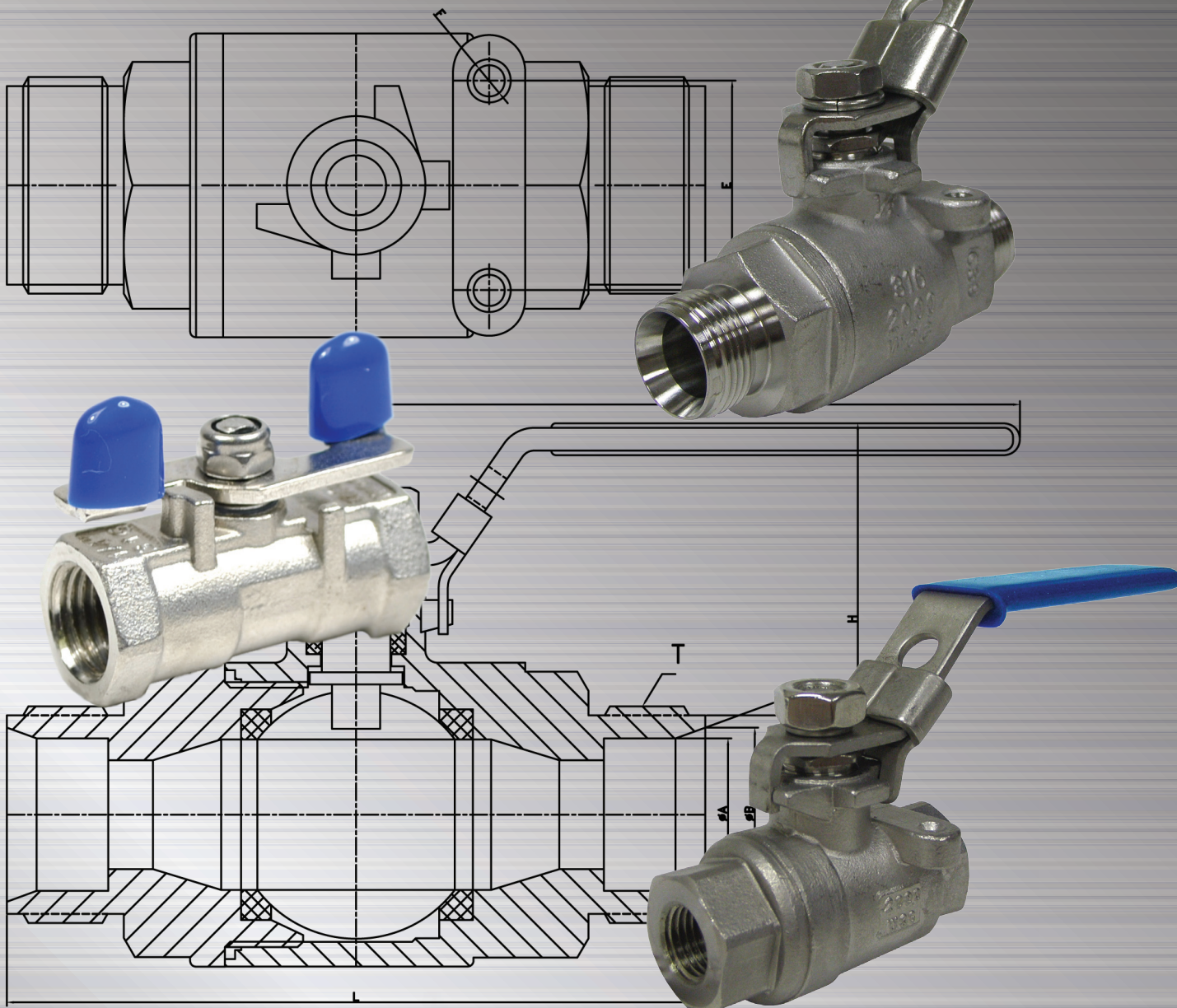


TECHVALVE



11 Series Valve (size 1/4"):

- PipeThread in accordance to ISO 228/1
- Wing handle
- Blow out proof stem
- Investment cast body
- Stainless steel 1000 PSI
- Material:ASTM A351/A351M



25 Series Valve (sizes 1/4" thru 2" FNPT):

- PipeThread in accordance with ANSI B2.1, BS 21.1973
- Locking Lever Handle
- With mounting device
- Blow-out proof stem/full bore
- Investment casting body and cap
- Stainless Steel 2000 PSI W.O.G. (1 1/4" - 2" 1500 PSI)
- Material: ASTM CF8M A351, ASTM CF8 A351

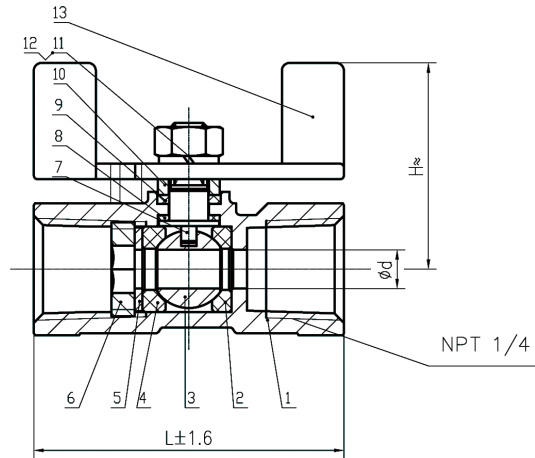


50 Series Valve (sizes 1/4" thru 1" Compression):

- Locking Lever Handle
- Blow-out proof stem/fullport
- Investment casting body and cap
- Stainless Steel 2000 PSI W.O.G.
- Material: ASTM CF8M A351
- Nuts & Ferrule are optional

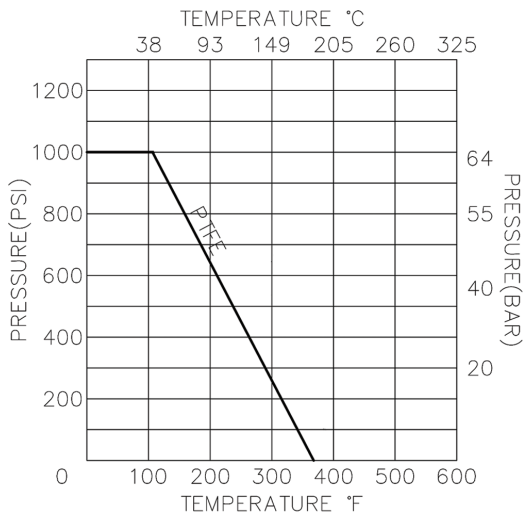


11 Series Valve (size 1/4"):



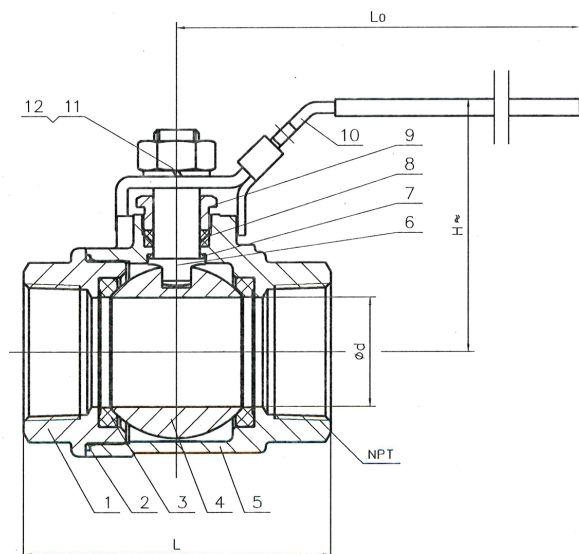
DN	L	d	NPT	H ≈
8	1/4"	40	5	1/4"

SPECIFICATIONS		
Nominal pressure	1000 PSI	
Shell test pressure	10.4	MPa
Seal test pressure	0.6	
Applicable temperature	-29~180	°C



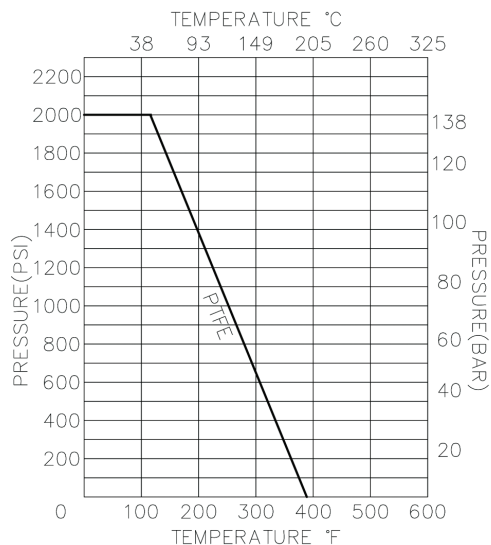
13	1PC Q11F-1000-11	HANDLE	1	201	
12	GB6170-86	NUT	1	304	
11	GB93-87	SPRING WASHER	1	304	
10	1PC Q11F-1000-10	GLAND	1	304	
9	1PC Q11F-1000-09	PACKING	1	PTFE	
8	1PC Q11F-1000-08	STEM WASHER	1	PTFE	
7	1PC Q11F-1000-07	STEM	1	A276 316	
6	1PC Q11F-1000-06	NUT	1	316	
5	1PC Q11F-1000-05	GASKET	1	316	
4	1PC Q11F-1000-04	SEAT RING 2	1	PTFE	
3	1PC Q11F-1000-03	BALL	1	A351 CF8M	
2	1PC Q11F-1000-02	SEAT RING 1	1	PTFE	
1	1PC Q11F-1000-01	BODY	1	A351 CF8M	
NO.	DRAWING NO.	DESCRIPTION	Q'TY	MATERIAL	REMARKS
TECHLINE PART# 11-0025W					
THREADED BALL VALVE					
1PC Q11F-1000-00					

25 Series Valve (sizes 1/4" thru 2" FNPT):



SPECIFICATIONS		
Nominal pressure	2000 Psi	
Shell test pressure	20.7	MPa
Seal test pressure	0.6	
Applicable temperature	-40~180	°C

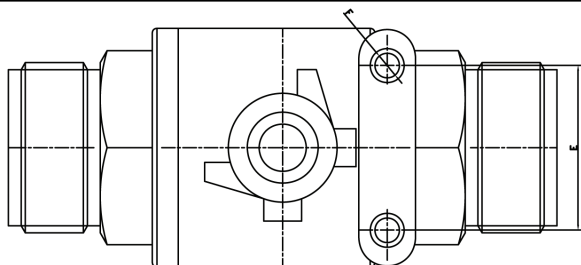
Nominal diameter		L	d	NPT	L0	H≈
8	1/4"	55	11	1/4"	95	48
10	3/8"	55	11.5	3/8"	95	48
15	1/2"	63	15	1/2"	105	54
20	3/4"	73	19.5	3/4"	120	65
25	1"	84	25	1"	140	71
32	1 1/4"	98	32	1 1/4"	145	81
40	1 1/2"	106	38	1 1/2"	170	96
50	2"	121	49.5	2"	185	105



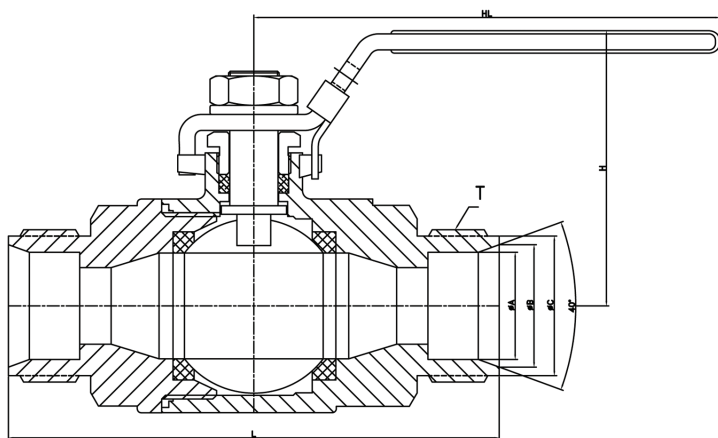
12	GB/T 6172-2000	NUT	1	A194-8	
11	GB/T 93-1987	SPRING WASHER	1	304	
10	Q11F-2000-10	HANDLE	1	201	
9	Q11F-2000-09	GLAND	1	A194-8	
8	Q11F-2000-08	PACKING		PTFE	
7	Q11F-2000-07	STEM WASHER	1	PTFE	
6	Q11F-2000-06	STEM	1	A276 316	
5	Q11F-2000-05	BODY	1	A351 CF8M	
4	Q11F-2000-04	BALL	1	SS316	
3	Q11F-2000-03	SEAT RING	2	PTFE	
2	Q11F-2000-02	GASKET	1	PTFE	
1	Q11F-2000-01	BONNET	1	A351 CF8M	
NO.	DRAWING NO.	DESCRIPTION	Q'TY	MATERIAL	REMARKS
GENERAL DRAWING					
MARK	BEFORE MODIFIED	AFTER MODIFIED	DATE	2PC THREADED BALL VALV	
DRA.		APP.			
CHK.		DATE		2PC Q11F-2000-00	

Part No. Example: 25-0025 (1/4")
 25-0038 (3/8")
 25-0050 (1/2")
 25-0100 (1")

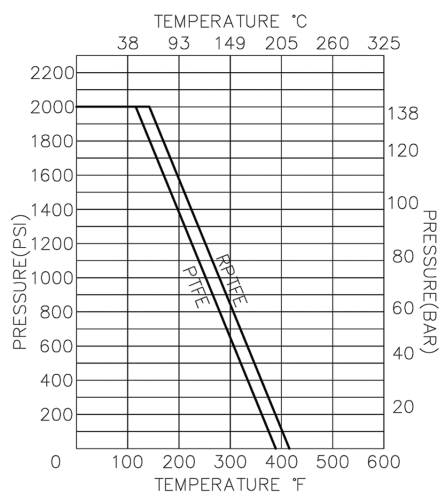
50 Series Valve (sizes 1/4" thru 1" Compression):



SIZE	øA	øB	øC	E	F	T	L	H	HL
1/4"	6.5	8.74	9.4	28.5	#10-32	7/16"*20UNEF	67	47	101
3/8"	9.65	11.89	12.57	28.5	#10-32	9/16"*20UNEF	67	47	101
1/2"	12.85	15.9	17.3	28.5	#10-32	3/4"*20UNEF	77	49.6	101
3/4"	19.16	21.3	23.6	35	#10-32	1"*20UNEF	83	58	101
1"	25.65	29.6	31.5	35	#10-32	1 5/16"*20UNEF	93	62	101



No.	PART NAME	MATERIAL
1	BODY	A351 CF8M
2	END CAP	A351 CF8M
3	BALL	A351 CF8M Gr.CF8M
4	BALL SEAT	RPTFE
5	BODY SEAL	PTFE
6	STEM	A276 TYPE 316
7	THRUST WASHER	RPTFE
8	STEM PACKING	PTFE
9	GLAND NUT	SUS 304
10	STEM WASHER	SUS 304
11	STEM NUT	SUS 304
12	HANDEL	SUS 304
13	HANDEL COVER	PVC
14	HANDEL LOCKING	SUS 304



2000 PSI 2-pc Compression Ball Valve	MATERIAL	APPROVE	CHECK	REV	F
	SCALE	FREE	UNIT	mm	DATE 2011.09.07
	PART NO	AF-70	Q'TY	DRAWN BY Peggy	
	OTHER	DWG NO	AF-70	TITLE	Compression End 2-pc Ball Valve
REMARKS					

Part No. Example: 50-0025 (1/4")
 50-0038 (3/8")
 50-0050 (1/2")
 50-0100 (1")

TECHVALVE



**See www.techlineint.com for terms and conditions*

TECHLINE
INTERNATIONAL

30852 State Hwy 181 • Spanish Fort, AL 36527
251.380.8940 • 800.395.3369 • (fax) 251.380.8941
www.techlineint.com • info@techlineint.com